



Reliable Water for You and Future Generations: **Project 2030 Update**

Water pipelines have about a 70-year lifespan. That means pipelines may need to be replaced within that time frame to avoid catastrophic failure. Because our area urbanized primarily in the 1960s and 1970s, we are strategically planning for the long-term replacement of our aging infrastructure. CHWD currently invests about \$2 million annually in water main replacements but, knowing the timeline to replace water mains at an elevated pace is approaching, we developed a long-term plan to replace more than 70% of CHWD pipelines between 2030 and 2080. The plan—Project 2030—guides our team of experts in assessing our network to determine which pipes to replace first.

• **How?** Our pipeline condition assessment involves several methods. CHWD's External Corrosion Direct Assessment will be utilized at four locations on one of the District's key transmission mains. The exterior surface of the pipeline is directly examined to evaluate its structural integrity and identify potential defects. The process then includes the following steps:

- **Visual Inspection.** A thorough visual examination of the exposed pipeline is conducted to find signs of rust (corrosion), dents, gouges, coating damage, and other surface anomalies that could indicate underlying issues.
- **Ultrasonic Thickness Testing.** Using ultrasonic waves, the thickness of the pipeline wall is measured to detect thinning caused by corrosion.
- **Pit Depth Measurements.** If pits or small cavities are found on the pipeline, this test measures their depth to evaluate the degree of localized corrosion damage.



Following the initial round of External Corrosion Direct Assessments, CHWD will evaluate other key mains. The results of each assessment will allow the District to prioritize maintenance or replacement. To learn more about Project 2030, visit chwd.org/2030.



Our Key Pillars

Citrus Heights Water District is dedicated to maintaining a reliable, sustainable water supply for our customers. This commitment is reflected in the District's key capital improvement programs, which focus on ensuring accurate water use measurement, preparing for the replacement of aging infrastructure, and expanding groundwater resources. Together, these key pillars form the foundation of CHWD's long-term strategy to meet the community's evolving water needs.



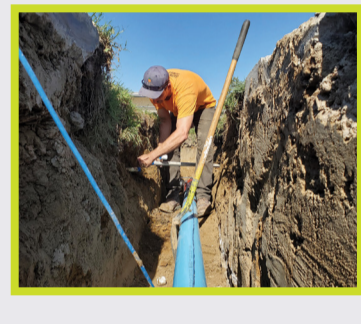
Meter Replacement Program

Last year, CHWD completed its first year of water meter testing for the District's 1" meters. This included identifying 200 meters for replacement and testing for accuracy. This program will continue annually for the foreseeable future so the District can use the test data to better inform future meter purchasing decisions.



Project 2030

The life span of a water main is about 70 years. CHWD must substantially increase replacement of aging pipes beginning in 2030 and beyond for many decades to ensure long-term water reliability. Learn more about the project and the prep work we're doing now on page 1.



Groundwater Expansion & Reinvestment

Groundwater provides a portion of CHWD's water supply during normal years and more during drought. By expanding groundwater, we reduce reliance on Folsom Lake and enhance reliability. The District is actively working on bringing two new wells online, with a substantial portion of the well development costs funded by Federal and State grants.



Behind the Tap

Dana Mellado, Management Analyst

Dana has been a valued member of the CHWD team for 11 years, working in customer service and financial management. "It is fast paced and unique," notes Dana. "I love my job. I work with such a great team, and I see my coworkers go above and beyond for our customers."

From age 8 until her mid-20s, Dana played competitive softball. "I played for a team called The Bad Girls, and Betty Boop was our mascot. My dad was assistant coach for the team, and we were undefeated that year. We clinched 1st place in the championship. It was awesome." In high school, she was featured in the local newspaper for her batting skills, home runs, and grand slams.

Nowadays, when Dana's not working, her favorite way to spend a day is outside, barbecuing, and relaxing by the fire pit.



Ripple Effects

It's been a busy – and fun – few months. We're proud to be part of this community! Photos: Staff Rotarians delivering dictionaries to local schools, CHWD employees dress as Tom Selleck for Halloween, CHWD team volunteering for the Citrus Heights Food Bank.



Ready, Set, Grow!

Now is the ideal time to get a head start on both cool and warm season crops in our mild climate, ensuring a fruitful garden year-round!

Vegetables

- **January:** Plant hardy winter vegetables like onions, garlic, and shallots. You can also start seeds indoors for broccoli, cauliflower, and cabbage to transplant in March.
- **February:** Time to start warm season crops indoors, such as tomatoes and peppers.
- **March:** Plant peas, carrots, radishes, beets, and potatoes. And, if starting seeds indoors, it's a good time to start cucumbers, melons, and squash for transplanting later.

Greens

- Plant leafy greens like lettuce, spinach, and kale. They grow well in cool conditions and can be harvested in early spring.

Herbs

- Now is the time to plant perennial herbs such as thyme, oregano, rosemary, and sage. If you're starting indoors, consider basil and parsley as well.

Flowers

- **January:** Pansies and violas are hardy and colorful, perfect for winter planting. Cyclamens bring color and thrive in cooler temps.
- **February:** Consider snapdragons, foxgloves, and calendula.
- **March:** The perfect time for lavender, geraniums, marigolds, and petunias.



Smooth Sailing: Pay Your Bill Online

Don't let snail mail slow you down. Signing up to get your bill via email is quick and easy. Visit chwd.org/pay.



Did You Know?

At CHWD, we partner with other agencies' construction projects to lessen traffic impacts.

Road construction is frustrating. At CHWD, we reduce our impact by partnering with other agencies that also work on roads. Our engineering team attends project coordination meetings with the City of Citrus Heights and Sacramento County to review upcoming and existing projects. We also work closely with the City and County engineering department, reviewing future road improvement projects to determine if water improvements are required along those roads.

This map shows 2025 projects that may affect you. Follow us on social for construction updates.

Information Pipeline

Dive Into Our 2025 WaterSmart Classes!

We offer a series of free landscape classes full of tips and tools to help you increase your water efficiency. Registration for our next WaterSmart class opens soon! Follow us on social to save your spot or to view past class videos and resources, visit chwd.org/WaterSmart.

Tap into Savings: Water-Efficient Toilets

Think your toilet might be leaking? Test it easily with a leak-detecting dye tab—available for free at the CHWD office. Drop one in the tank, and if the water in the bowl changes color, your toilet may need a new rubber flapper or float. Ready to upgrade your less efficient toilet (2 gallons per flush or more)? You may be eligible for a \$75 rebate for a new, water-efficient toilet (1.6 gallons per flush or less). If you qualify, you may claim up to three toilet rebates. **Learn more at chwd.org/Rebates.**

Keep The Connection Flowing

Sign up for CHWD news direct to your inbox at chwd.org/join or connect with us on social media. Access behind-the-scenes photos, videos, water efficiency tips, contests, and giveaways. Don't miss out! Scan the QR Code and sign up today.

